

Azimuthal Gamma

Azimuthal Gamma with Aim MWD Services

Aim Directional Services now offers Rotational Gamma, also known as “Azimuthal Gamma.” This gamma module can detect and transmit four real-time gamma readings (high-side, low-side, left, and right), along with Total Gamma ray. With these separate readings, Aim MWD can distribute a log with the individual curves and a borehole image. Capturing this valuable data in real-time allows the geologist, geophysicist, and geosteering team to make the correct target change to stay in zone.



Defining Features

- Proven technology with Tensor based design
- Real-time Downhole RPM
- Reliable gamma correlation of Total Gamma
- Four gamma curves (high-side, low-side, left, right) plus Total Gamma
- Gamma sensor which can be placed anywhere in the MWD string

Aim Advantages

- An additional inclination sensor is also offered (using generic variables to capture the information in a customizable format)
- Aim MWD department coordinates with the client's geology and geosteering teams to customize logs to help in their decision-making

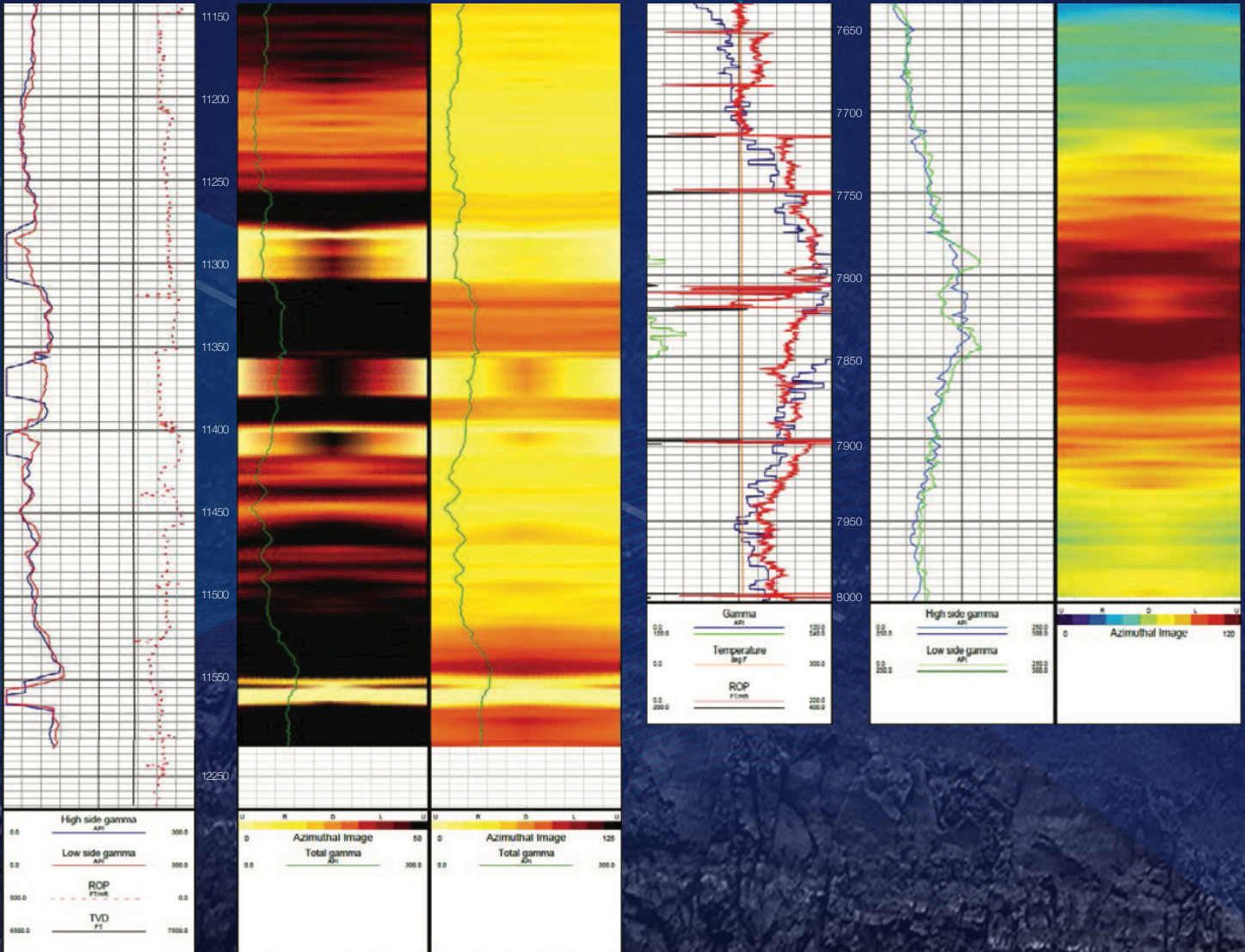


Real Benefits

- Aim provides information between surveys to make crucial corrections
- All four curves and total gamma can be pulsed up in real-time and plotted on a log graph
- A color image log allows for a better visualization of the wellbore
- Continuous inclination gives the user the ability to calculate build rates in real-time

Azimuthal Gamma

Example Logs



Proven Results

- Customer feedback has revealed azimuthal gamma to be a helpful tool for their Geo team to stay in zone.
- Having the image log available in real-time increases the communication between the geology department, drilling engineer and directional driller while steering the lateral.
- It has shown an increase in well production rates by having the ability to stay in a tight pay zone throughout the lateral.